
BEER & WINE

Please ask us about current selections.

COCKTAILS

MIMOSAS

By the glass with choice of juice 8

By the bottle with choice of two juices 32

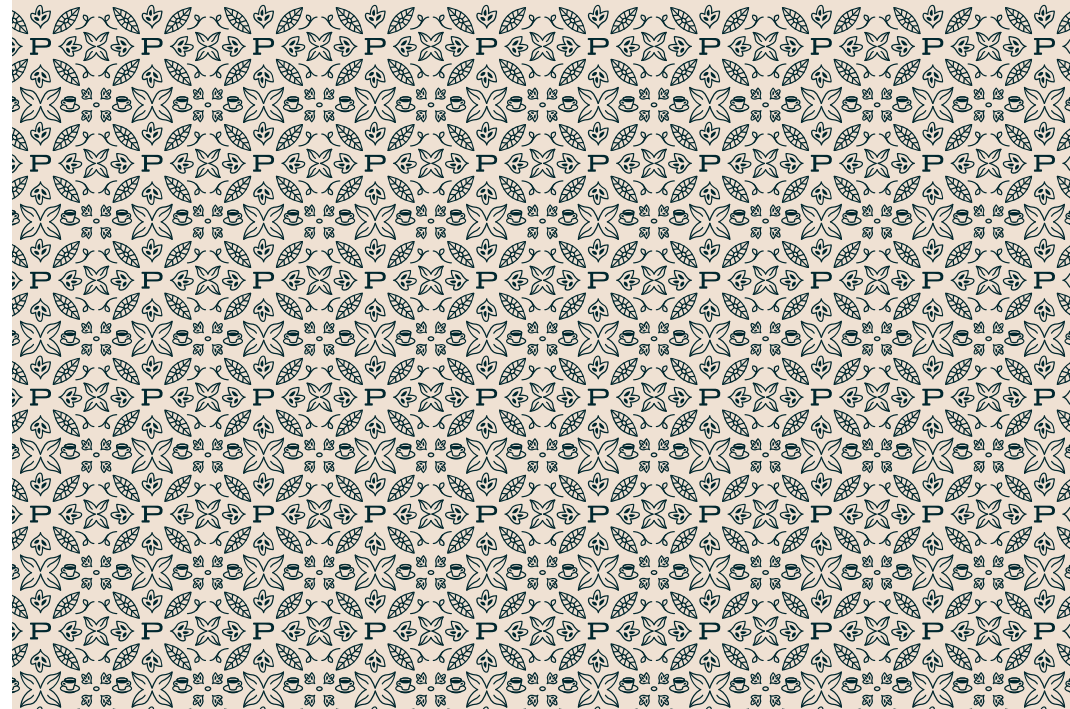
Juices: orange, cranberry, mango, peach, guava

CLASSIC BLOODY MARY 10

Vodka, house bloody mary mix



Beverages



COFFEE & ESPRESSO

 CAN BE SERVED ICED

DAILY BREW	3 / 3.5 12oz / 16oz	LATTE 	12oz 4.75
POUR OVER	MKT	MOCHA 	12oz 5.5
<i>see our current offerings</i>		AMERICANO 	8oz 3.25
ESPRESSO	3.25	AU LAIT	12oz 3.5
MACCHIATO	3oz 3.5	drip coffee with steamed milk.	
double shot of espresso with a touch of milk.		NITRO COLD BREW	12oz 4.5
CORTADO	4oz 3.75	<i>on draft</i>	
equal parts espresso and milk.		COLD BREW	12oz 4
CAPPUCCINO	8oz 4		
FLAT WHITE	5oz 4.5		

SEASONAL

PURPLE RAIN	5.75
a beautiful and refreshing lemonade with butterfly pea flower, honey, and mint bitters.	
CHERRY BLOSSOM ICED LATTE	5.75
a perfect summer latte made with house-made rose lavender syrup, cherry bitters, and garnished with dried rose petals.	
BLUEBERRY LATTE	5.5
subtle blueberry flavored latte with milk of your choice.	
COASTAL COLD BREW	5
light and restoring cold brew served with house-made coconut syrup and macadamia milk.	
LIME ESPRESSO SPRITZER	4
shot of espresso floated over our house-made ginger lime soda.	
SALTED HONEY LAVENDER LATTE	4.5
lightly salted, floral latte made with our house-made lavender and honey syrups.	

TO GO

32oz growlers unless noted otherwise

LATTE	14	CHAI	14
<i>flavored + 1</i>		<i>dirty chai + 4.5</i>	
<i>milk alternatives + 1</i>			
COLD BREW	10	BOX OF COFFEE (96oz)	25
		box of freshly brewed coffee for	
		8-10 people. Includes cups, sugar,	
		cream & oat milk.	
NITRO	11.5		

◆ BRING YOUR EMPTY BACK for a \$3 CREDIT ◆



LOOSE LEAF TEA

 ALL CAN BE SERVED ICED

BLACK		HERBAL (all caffeine-free)	
BLACK ICED TEA	2.5	HIBISCUS BERRY	3
sweet and unsweet.		a rejuvenating tropical fruit tea	
ENGLISH BREAKFAST	3.5	highlighting tart hibiscus and	
lively, robust red cup with a brisk flavor		luscious forest berries.	
and notes of dates and raisins.		PEPPERMINT	3.75
EARL GREY	3.5	distinctive flavor and heady aroma,	
smooth and lively with the unique		calms the body and soothes the	
citrusy, floral aroma of bergamot oranges.		digestive system.	
OTHER		TURMERIC GINGER	3.75
JADE CLOUD (Green)	4	an enlivening blend of golden turmeric	
a lively, delicious everyday green tea nurtured		with spicy ginger and zesty citrus.	
by the clouds and cool mist of early spring.		BLUEBERRY ROOIBOS	3.75
IRON GODDESS OF MERCY (Oolong)	5	a succulent rooibos blend with	
smooth and rich with aromas of roasted chestnut		sweet blueberries and revitalizing	
and notes of dried apricot early spring.		schisandra berries.	
TROPICAL COCONUT (Oolong)	4.5	TEA LATTES	5
a rejuvenating blend of flowery oolong tea		latte made with your choice	
paired with refreshing, creamy coconut.		of loose leaf tea and oat milk.	
PEACH BLOSSOM (White)	4		
infused with juicy peach, tangerine			
and aromatic blossoms.			

MORE DRINKS

 CAN BE SERVED ICED

CHAI LATTE 	12oz 4.75	CHOCOLATE MILK	3.25
MATCHA LATTE 	12oz 5	ORANGE JUICE	3.25
HOT CHOCOLATE	12oz 4	SAN PELLEGRINO	1L 5
KIDS HOT CHOCOLATE	8oz 3		

Edits

ALTERNATIVE/NON-DAIRY MILKS	1
HOUSE-MADE SYRUPS	
vanilla, caramel, mocha, lavender, or rose-lavender	0.75
maple bourbon	1
ADD A SHOT	1.5