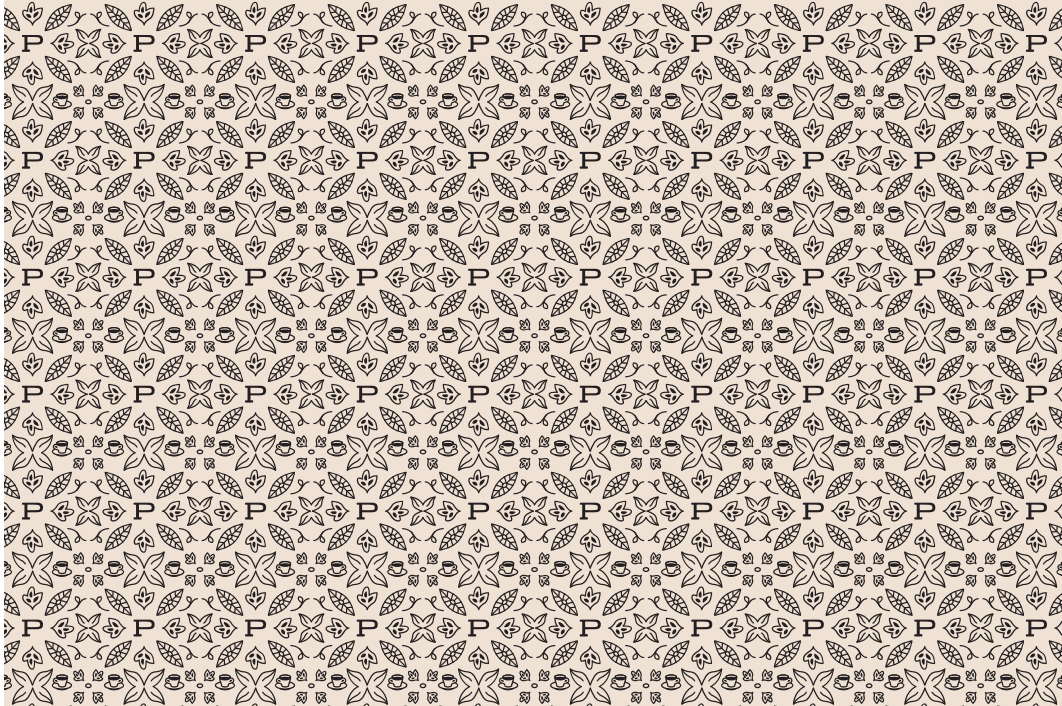


**BEER & WINE**



*Please ask us about current selections.*



*Beverages*






## COFFEE & ESPRESSO



DAILY BREW	12oz / 16oz 3.5 / 4	LATTE 	12oz 4.75
POUR OVER <i>see our current offerings</i>	MKT	AMERICANO 	8oz 3.5
ESPRESSO <i>double shot</i>	2oz 3.25	AU LAIT	12oz 3.75
MACCHIATO	3oz 3.5	NITRO COLD BREW	12oz 5.75
CORTADO	4oz 4	COLD BREW	12oz 5.5
FLAT WHITE	5oz 4.25		
CAPPUCCINO	6oz 4.5		

 CAN BE SERVED ICED

## SEASONAL ALL SYRUPS ARE HOUSE MADE

SPEARMINT LIME HIBISCUS TEA	10oz 3.5	SALTED PISTACHIO MOCHA 	12oz 5.75
iced hibiscus tea, spearmint syrup, lime juice.			
BLACKBERRY GINGER LATTE 	12oz 5.75	CHERRY TONIC	12oz 5.5
espresso, blackberry-ginger syrup.			
PEACH LATTE 	12oz 5.75		
espresso, peach, vanilla.			

## MORE DRINKS

PURPLE RAIN	12oz 5.75	HOT CHOCOLATE	12oz 4
lemonade, butterfly pea flower, honey, mint bitters.			
CHAI LATTE 	12oz 5.75	KOMBUCHA <i>on tap or canned</i>	5
MATCHA LATTE 	12oz 5.75	CHOCOLATE MILK	3.25
ORANGE MATCHA LATTE	12oz 6	ORANGE JUICE	3.25
matcha, orange syrup, milk.			
AFFOGATO	5.5	SAN PELLEGRINO	.5L 3
espresso over vanilla ice cream.			
		HOUSE SELTZER	2

*Edits*

ALTERNATIVE/NON-DAIRY MILKS	
almond, macadamia, oat	1
HOUSE-MADE SYRUPS	
honey, vanilla, caramel, mocha, or lavender	0.75
maple bourbon	1
ADD A SHOT	1.5

\*Due to inconsistent supply with NC ABC, some liquors may be substituted for comparable quality and profile in case of outages beyond our control.

\*\*Consuming raw or undercooked meats, poultry, seafood, shellfish, or eggs may increase your risk of foodborne illness.

## LOOSE LEAF TEA

### BLACK

BLACK ICED TEA (SWEET OR UNSWEET)	3
ENGLISH BREAKFAST	3.5
brisk, chocolatey.	
EARL GREY	3.5
robust, floral.	

### OTHER

JASMINE GREEN	4
green tea, floral.	
TROPICAL COCONUT	4.5
oolong tea, creamy.	
PEACH BLOSSOM	4
white tea, juicy.	

 ALL CAN BE SERVED ICED

### HERBAL (all caffeine-free)

ICED HIBISCUS BERRY	3.75
fruity, tart.	
BLUEBERRY ROOIBOS	3.75
sweet, robust.	
TURMERIC GINGER	3.75
spicy, zesty.	
GINGER LIME ROOIBOS	3.75
bright, citrusy.	

TEA LATTES  5  
latte made with your choice of loose leaf tea.

## BRUNCH CLASSICS

CLASSIC BLOODY MARY	10	MIMOSA	
vodka, house bloody mary mix		by the glass with choice of juice 9	
		by the bottle with choice of two juices 32	
juices: orange, peach, pineapple, cranberry, mango, guava			
BLOODY MARIA			
tequila, house bloody mary mix 10			
mezcal, house bloody mary mix 12			

## COCKTAILS

ESPRESSO MARTINI	12	HIBISCUS STRAWBERRY SPRITZER	9
Tito's vodka, espresso, Tia Maria coffee liqueur, oat milk, demerara syrup.		Weldon Mills vodka, hibiscus syrup, muddled strawberry, lemon juice, club soda.	
ORANGE VANILLA ESPRESSO MARTINI	12.5	RASPBERRY GIN SOUR*	11
Tito's vodka, espresso, oat milk, orange vanilla syrup, coffee liquor.		Crème de Cassis, Weldon Mills gin, raspberry syrup, lemon juice, whisked egg white.	
IRISH COFFEE	12.5	COFFEE OLD FASHIONED	12
Jameson Irish whiskey, demerara syrup, and our daily brew, topped with our house-made whipped cream.		Evan Williams bourbon, espresso, Crème de Cacao, maple bourbon syrup, orange and fig bitters.	
FALLING PEACH	12	CHARRED LEMON MARGARITA	15
Weldon Mills gin, rosemary syrup, lemon juice, and peach nectar.		mezcal rinse, tequila, smoked lemon juice, Triple Sec, simple syrup, Hawaiian black salt and sugar rim.	

## MOCKTAILS

*upcharge for liquor 4*

THE HEIRLOOM	7	PEACHES AND CREAM	7
seasoned tomato juice, sweetened lemon juice, mint, club soda.		oat milk, peach nectar, peach syrup, vegan whipped cream.	
THE SALAD	8		
muddled cucumber, strawberry, basil, lemon juice, basil-ginger syrup, ginger beer, soda water.			