

BRUNCH CLASSICS

CLASSIC BLOODY MARY 10
vodka, house bloody mary mix

BLOODY MARIA
tequila, house bloody mary mix 10
mezcal, house bloody mary mix 12

MIMOSA
by the glass with choice of juice 9
by the bottle with choice of two juices 32
*juices: orange, peach, pineapple,
cranberry, mango, guava*

COCKTAILS

ESPRESSO MARTINI 12
Tito's vodka, espresso, Tia Maria coffee liqueur,
oat milk, demerara syrup.

HONEY CHAI APEROL SPRITZ 12
house-made honey chai syrup, apple cider,
Aperol, and bubbles.

SPICY 'N STORMY 12
rum, jalapeno-infused grenadine,
ginger liqueur, ginger beer, and lime juice.

BOURBON LEMONADE 11.5
bourbon, mint syrup, and lemonade.

SALTED MAPLE OLD FASHIONED 12
bourbon, salted maple syrup, molasses bitters.

SPICED CRAN-MULE 12.5
vodka, Ancho-Reyes, spiced cranberry syrup,
lime juice.

AMARETTO COFFEE 12.5
Amaretto, daily brew, demerara, whipped cream,
topped with nutmeg.

WARM VANILLA MARGARITA 14
tequila, Amaretto, house-made vanilla syrup,
lime juice.

MOCKTAILS

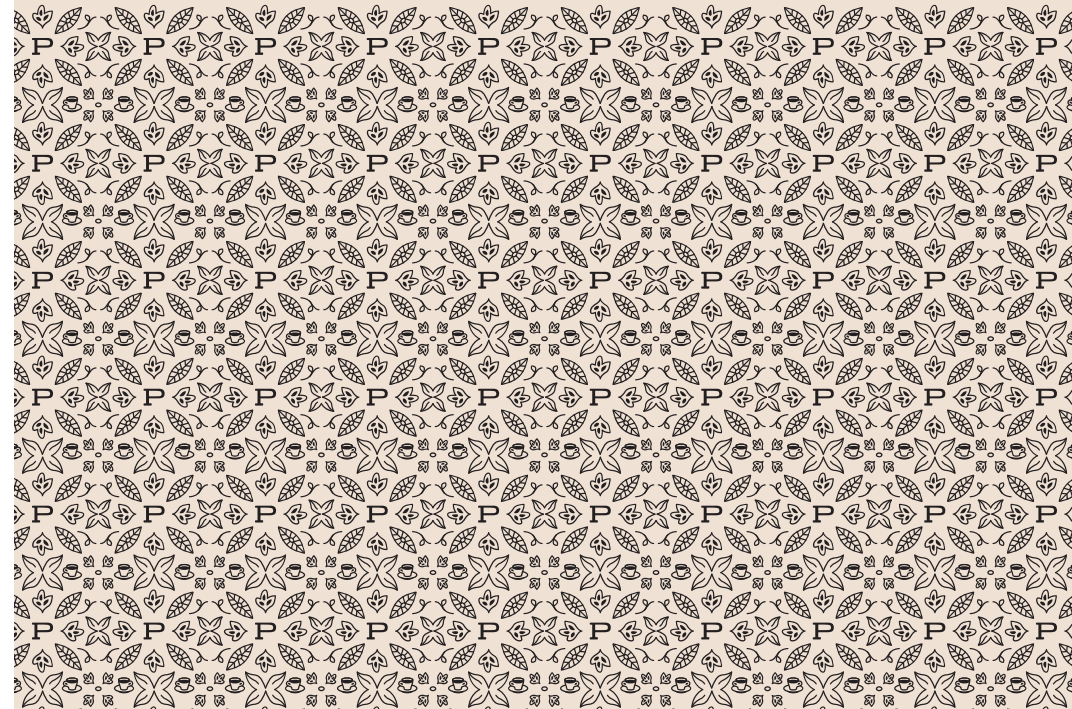
upcharge for liquor 4

SPARKLING CRANBERRY APPLE 8
spiced apple syrup, cranberry juice,
rosemary, and club soda



THE BRAMBLE 8
blackberry, honey, mint,
topped with club soda



Beverages







COFFEE & ESPRESSO



| | | | |
|--|---------------------|---|----------|
| DAILY BREW | 12oz / 16oz 3.5 / 4 | LATTE  | 12oz 5 |
| POUR OVER <i>see our current offerings</i> | MKT | AMERICANO  | 8oz 3.75 |
| ESPRESSO <i>double shot</i> | 2oz 3.5 | AU LAIT | 12oz 4 |
| MACCHIATO | 3oz 3.75 | NITRO COLD BREW | 12oz 6 |
| CORTADO | 4oz 4 | COLD BREW | 12oz 5.5 |
| FLAT WHITE | 5oz 4.25 | | |
| CAPPUCCINO | 6oz 4.5 | | |

 CAN BE SERVED ICED

SEASONAL ALL SYRUPS ARE HOUSE MADE

| | | | |
|--|--------|--|--------|
| SALTED PISTACHIO MOCHA  | 12oz 6 | SPICED PEAR CHAI LATTE  | 12oz 6 |
| espresso, pistachio syrup, mocha syrup, salt, milk of choice. | | chai concentrate, spiced pear syrup, milk of choice. <i>add shot of espresso +1.5</i> | |
| CINNAMON PLUM ORANGE TEA LATTE  | 12oz 6 | PEAR GINGER SPRITZER <i>served iced only.</i> | 12oz 6 |
| cinnamon plum tea, orange vanilla syrup, steamed oat milk. | | espresso, ginger beer, pear syrup, lemon juice. <i>substitute matcha +1</i> | |
| BANANA BREAD LATTE  | 12oz 6 | | |
| espresso, banana bread syrup, milk of choice. | | | |

MORE DRINKS

| | | | |
|--|-----------|----------------------------------|-------|
| PURPLE RAIN | 12oz 5.75 | KOMBUCHA <i>on tap or canned</i> | 5 |
| lemonade, butterfly pea flower, honey, mint bitters. | | CHOCOLATE MILK | 3.25 |
| CHAI LATTE  | 12oz 6 | ORANGE JUICE | 3.25 |
| MATCHA LATTE  | 12oz 6 | APPLE JUICE | 3.25 |
| AFFOGATO | 5.5 | SAN PELLEGRINO | .5L 3 |
| espresso over vanilla ice cream. | | HOUSE SELTZER | 2 |
| HOT CHOCOLATE | 12oz 4.25 | | |
| CHESS PIE HOT CHOCOLATE | 12oz 5 | | |
| chocolate, graham cracker syrup, milk of choice. | | | |

Edits

| | |
|---|-----|
| ALTERNATIVE/NON-DAIRY MILKS | 1 |
| almond, macadamia, oat | |
| HOUSE-MADE SYRUPS | 1 |
| honey, vanilla, caramel, mocha, or lavender | |
| ADD AN ESPRESSO SHOT | 1.5 |

**Due to inconsistent supply with NC ABC, some liquors may be substituted for comparable quality and profile in case of outages beyond our control.*

***Consuming raw or undercooked meats, poultry, seafood, shellfish, or eggs may increase your risk of foodborne illness.*

LOOSE LEAF TEA

BLACK

| | |
|-----------------------------------|------|
| BLACK ICED TEA (SWEET OR UNSWEET) | 3.25 |
| ENGLISH BREAKFAST | 3.5 |
| brisk, chocolatey. | |
| EARL GREY | 3.5 |
| robust, floral. | |

OTHER

| | |
|--------------------|------|
| JASMINE GREEN | 4.25 |
| green tea, floral. | |
| PEACH BLOSSOM | 4.25 |
| white tea, juicy. | |

 ALL CAN BE SERVED ICED

HERBAL (all caffeine-free)

| | |
|---------------------|------|
| ICED HIBISCUS BERRY | 3.75 |
| fruity, tart. | |
| CINNAMON PLUM | 3.75 |
| juicy, warm. | |
| TURMERIC GINGER | 4 |
| spicy, zesty. | |
| GINGER LIME ROOIBOS | 4 |
| bright, citrusy. | |

TEA LATTES  5.25
latte made with your choice of loose leaf tea.

BEER

16 OZ DRAFT

Featured Brewery

ATOMIC CLOCK | *Durham*

Ask server about seasonal selections and pricing.

BOTTLE/CAN

Featured Brewery

ATOMIC CLOCK | *Durham*

Ask server about seasonal selections and pricing.

WINE

WHITE *by the glass or bottle*

| | |
|---|---------|
| VITICOLTURI PONTE <i>Pinot Grigio</i> | 9 / 36 |
| COASTERS DEL SIO CELESTIA | 10 / 38 |

SPARKLING *by the glass or bottle*

| | |
|---------------------------|--------|
| BERVINI <i>Prosecco</i> | 8 / 24 |
|---------------------------|--------|

RED *by the glass or bottle*

| | |
|----------------------------------|--------|
| VITICOLTURI PONTE <i>Rosso</i> | 9 / 36 |
| COASTERS DEL SIO CELESTIA | 9 / 36 |

See back for our full cocktail menu.