

BRUNCH CLASSICS

CLASSIC BLOODY MARY 10
vodka, house bloody mary mix

BLOODY MARIA
tequila, house bloody mary mix 10
mezcal, house bloody mary mix 12

MIMOSA
by the glass with choice of juice 9
by the bottle with choice of two juices 32
*juices: orange, peach, pineapple,
cranberry, mango, guava*

COCKTAILS

ESPRESSO MARTINI 12
Tito's vodka, espresso, Tia Maria coffee liqueur,
oat milk, demerara syrup.

HONEY CHAI APEROL SPRITZ 12
house-made honey chai syrup, apple cider,
Aperol, and bubbles.

SPICY 'N STORMY 12
rum, jalapeno-infused grenadine,
ginger liqueur, ginger beer, and lime juice.

BOURBON LEMONADE 11.5
bourbon, mint syrup, and lemonade.

SALTED MAPLE OLD FASHIONED 12
bourbon, salted maple syrup, molasses bitters.

SPICED CRAN-MULE 12.5
vodka, Ancho-Reyes, spiced cranberry syrup,
lime juice.

AMARETTO COFFEE 12.5
Amaretto, daily brew, demerara, whipped cream,
topped with nutmeg.

WARM VANILLA MARGARITA 14
tequila, Amaretto, house-made vanilla syrup,
lime juice.

MOCKTAILS

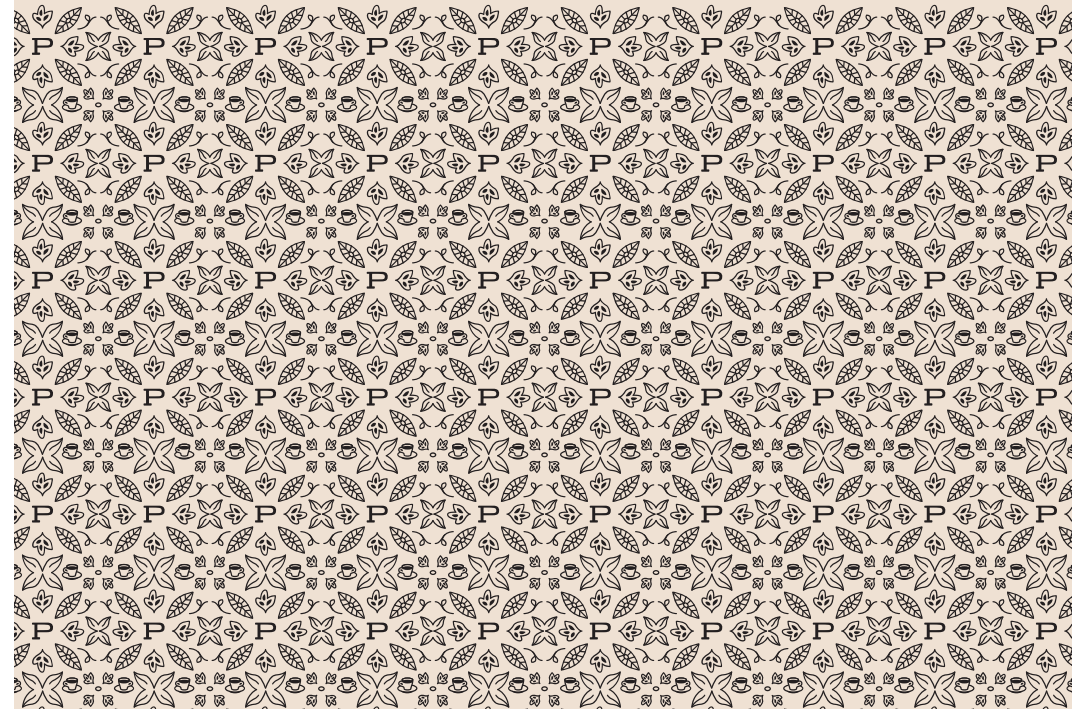
upcharge for liquor 4

SPARKLING CRANBERRY APPLE 8
spiced apple syrup, cranberry juice,
rosemary, and club soda



THE BRAMBLE 8
blackberry, honey, mint,
topped with club soda



Beverages







COFFEE & ESPRESSO



DAILY BREW	12oz / 16oz 3.5 / 4	LATTE 	12oz 5
POUR OVER <i>see our current offerings</i>	MKT	AMERICANO 	8oz 3.75
ESPRESSO <i>double shot</i>	2oz 3.5	AU LAIT	12oz 4
MACCHIATO	3oz 3.75	NITRO COLD BREW	12oz 6
CORTADO	4oz 4	COLD BREW	12oz 5.5
FLAT WHITE	5oz 4.25		
CAPPUCCINO	6oz 4.5		

 CAN BE SERVED ICED

SEASONAL ALL SYRUPS ARE HOUSE MADE

SALTED PISTACHIO MOCHA 	12oz 6	SPICED PEAR CHAI LATTE 	12oz 6
espresso, pistachio syrup, mocha syrup, salt, milk of choice.		chai concentrate, spiced pear syrup, milk of choice. <i>add shot of espresso +1.5</i>	
CINNAMON PLUM ORANGE TEA LATTE 	12oz 6	PEAR GINGER SPRITZER <i>served iced only.</i>	12oz 6
cinnamon plum tea, orange vanilla syrup, steamed oat milk.		espresso, ginger beer, pear syrup, lemon juice. <i>substitute matcha +1</i>	
BANANA BREAD LATTE 	12oz 6		
espresso, banana bread syrup, milk of choice.			

MORE DRINKS

PURPLE RAIN	12oz 5.75	KOMBUCHA <i>on tap or canned</i>	5
lemonade, butterfly pea flower, honey, mint bitters.		CHOCOLATE MILK	3.25
CHAI LATTE 	12oz 6	ORANGE JUICE	3.25
MATCHA LATTE 	12oz 6	APPLE JUICE	3.25
AFFOGATO	5.5	SAN PELLEGRINO	.5L 3
espresso over vanilla ice cream.		HOUSE SELTZER	2
HOT CHOCOLATE	12oz 4.25		
CHESS PIE HOT CHOCOLATE	12oz 5		
chocolate, graham cracker syrup, milk of choice.			

Edits

ALTERNATIVE/NON-DAIRY MILKS almond, macadamia, oat	1
HOUSE-MADE SYRUPS honey, vanilla, caramel, mocha, or lavender	1
ADD AN ESPRESSO SHOT	1.5

**Due to inconsistent supply with NC ABC, some liquors may be substituted for comparable quality and profile in case of outages beyond our control.*

***Consuming raw or undercooked meats, poultry, seafood, shellfish, or eggs may increase your risk of foodborne illness.*

LOOSE LEAF TEA

BLACK

BLACK ICED TEA (SWEET OR UNSWEET)	3.25
ENGLISH BREAKFAST brisk, chocolaty.	3.5
EARL GREY robust, floral.	3.5

OTHER

JASMINE GREEN green tea, floral.	4.25
PEACH BLOSSOM white tea, juicy.	4.25

 ALL CAN BE SERVED ICED

HERBAL (all caffeine-free)

ICED HIBISCUS BERRY fruity, tart.	3.75
CINNAMON PLUM juicy, warm.	3.75
TURMERIC GINGER spicy, zesty.	4
GINGER LIME ROOIBOS bright, citrusy.	4

TEA LATTES  5.25
latte made with your choice of loose leaf tea.

BEER

BOTTLE/CAN

Featured Brewery

ATOMIC CLOCK | Durham

Ask server about seasonal selections and pricing.

WINE

BOTTLE/GLASS

Please ask us about current selections.



See back for our full cocktail menu.