

## BRUNCH CLASSICS

<b>CLASSIC BLOODY MARY</b> ..... 10 vodka, house bloody mary mix	<b>MIMOSA</b> by the glass with choice of juice ..... 9 by the bottle with choice of two juices ..... 32 <i>juices: orange, peach, pineapple, cranberry, mango, guava</i>
<b>BLOODY MARIA</b> tequila, house bloody mary mix ..... 10 mezcal, house bloody mary mix ..... 12	

## COCKTAILS

<b>ESPRESSO MARTINI</b> ..... 12 Tito's vodka, espresso, Tia Maria coffee liqueur, oat milk, demerara syrup.	<b>SALTED MAPLE OLD FASHIONED</b> ..... 12 bourbon, salted maple syrup, molasses bitters.
<b>HONEY CHAI APEROL SPRITZ</b> ..... 12 house-made honey chai syrup, apple cider, Aperol, and bubbles.	<b>SPICED CRAN-MULE</b> ..... 12.5 vodka, Ancho-Reyes, spiced cranberry syrup, lime juice.
<b>SPICY 'N STORMY</b> ..... 12 rum, jalapeno-infused grenadine, ginger liqueur, ginger beer, and lime juice.	<b>AMARETTO COFFEE</b> ..... 12.5 Amaretto, daily brew, demerara, whipped cream, topped with nutmeg.
<b>BOURBON LEMONADE</b> ..... 11.5 bourbon, mint syrup, and lemonade.	<b>WARM VANILLA MARGARITA</b> ..... 14 tequila, Amaretto, house-made vanilla syrup, lime juice.

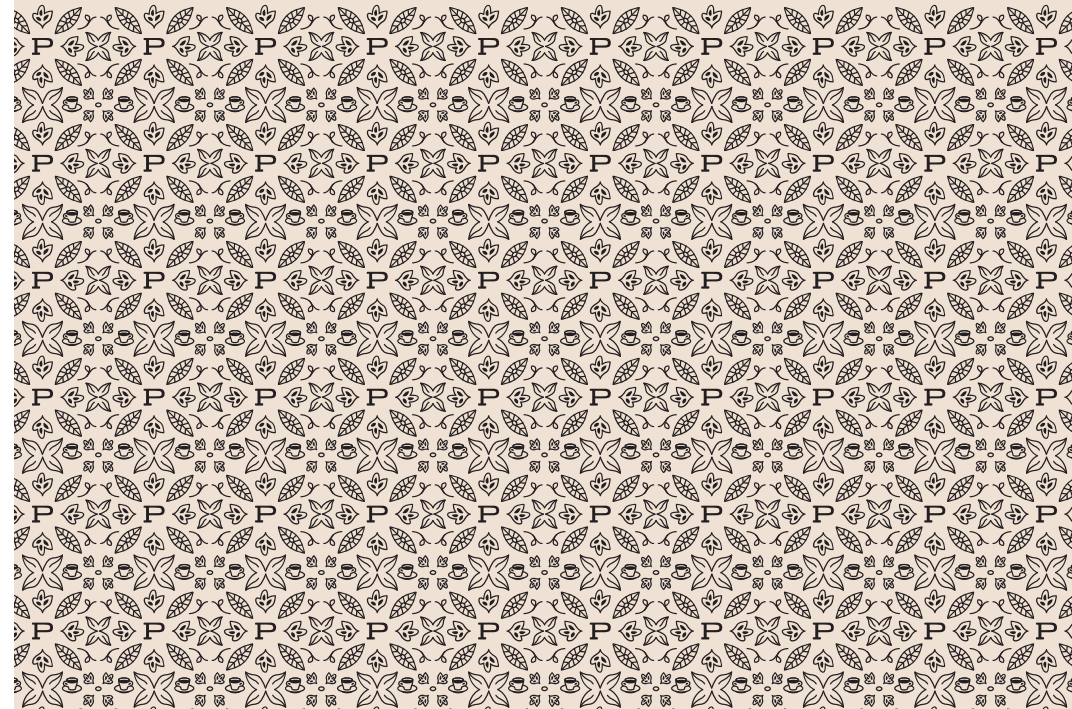
## MOCKTAILS

*upcharge for liquor 4*

<b>SPARKLING CRANBERRY APPLE</b> ..... 8 spiced apple syrup, cranberry juice, rosemary, and club soda	<b>THE BRAMBLE</b> ..... 8 blackberry, honey, mint, topped with club soda
---	---



# Beverages



## COFFEE & ESPRESSO

DAILY BREW	12oz / 16oz	3.75 / 4.25
POUR OVER	<i>see our current offerings</i> <b>MKT</b>	
ESPRESSO <i>double shot</i>	2oz	3.75
MACCHIATO	3oz	4
CORTADO	4oz	4.25
FLAT WHITE	5oz	4.5
CAPPUCCINO	6oz	4.75

CAN BE SERVED ICED

LATTE	12oz	5.25
AMERICANO	8oz	4
AU LAIT	12oz	4.25
NITRO COLD BREW	12oz	6.25
COLD BREW	12oz	5.75

## SEASONAL ALL SYRUPS ARE HOUSE MADE

SALTED PISTACHIO MOCHA	12oz	6.25
espresso, pistachio syrup, mocha syrup, salt, milk of choice.		
CINNAMON PLUM ORANGE TEA LATTE	12oz	6
cinnamon plum tea, orange vanilla syrup, steamed oat milk.		
BANANA BREAD LATTE	12oz	6.25
espresso, banana bread syrup, milk of choice.		

SPICED PEAR CHAI LATTE	12oz	6.5
chai concentrate, spiced pear syrup, milk of choice. <i>add shot of espresso +1.5</i>		
PEAR GINGER SPRITZER <i>served iced only.</i>	12oz	6
espresso, ginger beer, pear syrup, lemon juice. <i>substitute matcha +1</i>		

## MORE DRINKS

PURPLE RAIN	12oz	5.75
lemonade, butterfly pea flower, honey, mint bitters.		
CHAI LATTE	12oz	6
MATCHA LATTE	12oz	6
AFFOGATO		5.5
espresso over vanilla ice cream.		
HOT CHOCOLATE	12oz	4.25
CHESS PIE HOT CHOCOLATE	12oz	5
chocolate, graham cracker syrup, milk of choice.		

KOMBUCHA <i>on tap or canned</i>		5
CHOCOLATE MILK		3.25
ORANGE JUICE		3.25
APPLE JUICE		3.25
SAN PELLEGRINO	.5L	3
HOUSE SELTZER		2

*Edits* {

ALTERNATIVE/NON-DAIRY MILKS	1
almond, macadamia, oat	
HOUSE-MADE SYRUPS	1
honey, vanilla, caramel, mocha, or lavender	
ADD AN ESPRESSO SHOT	1.5

*\*Due to inconsistent supply with NC ABC, some liquors may be substituted for comparable quality and profile in case of outages beyond our control.*

*\*\*Consuming raw or undercooked meats, poultry, seafood, shellfish, or eggs may increase your risk of foodborne illness.*

## LOOSE LEAF TEA

### BLACK

BLACK ICED TEA (SWEET OR UNSWEET)	3.25
ENGLISH BREAKFAST	3.5
brisk, chocolatey.	
EARL GREY	3.5
robust, floral.	

### OTHER

JASMINE GREEN	4.25
green tea, floral.	
PEACH BLOSSOM	4.25
white tea, juicy.	

## ALL CAN BE SERVED ICED

### HERBAL (all caffeine-free)

ICED HIBISCUS BERRY	3.75
fruity, tart.	
CINNAMON PLUM	3.75
juicy, warm.	
TURMERIC GINGER	4
spicy, zesty.	
GINGER LIME ROOIBOS	4
bright, citrusy.	

TEA LATTES	5.25
latte made with your choice of loose leaf tea.	

## BEER

### 16 OZ DRAFT

#### *Featured Brewery*

#### ATOMIC CLOCK | *Durham*

Ask server about seasonal selections and pricing.

### BOTTLE/CAN

#### *Featured Brewery*

#### ATOMIC CLOCK | *Durham*

Ask server about seasonal selections and pricing.

## WINE

### WHITE *by the glass or bottle*

VITICOLTURI PONTE   <i>Pinot Grigio</i>	9 / 36
COASTERS DEL SIO CELESTIA	10 / 38

### SPARKLING *by the glass or bottle*

BERVINI   <i>Prosecco</i>	8 / 24
---------------------------	--------

### RED *by the glass or bottle*

VITICOLTURI PONTE   <i>Rosso</i>	9 / 36
COASTERS DEL SIO CELESTIA	9 / 36

*See back for our full cocktail menu.*