

BRUNCH CLASSICS

CLASSIC BLOODY MARY 10 vodka, house bloody mary mix	MIMOSA by the glass with choice of juice 9 by the bottle with choice of two juices 32 <i>juices: orange, peach, pineapple, cranberry, mango, guava</i>
BLOODY MARIA tequila, house bloody mary mix 10 mezcal, house bloody mary mix 12	

COCKTAILS

ESPRESSO MARTINI 12 Tito's vodka, espresso, Tia Maria coffee liqueur, oat milk, demerara syrup.	SALTED MAPLE OLD FASHIONED 12 bourbon, salted maple syrup, molasses bitters.
HONEY CHAI APEROL SPRITZ 12 house-made honey chai syrup, apple cider, Aperol, and bubbles.	SPICED CRAN-MULE 12.5 vodka, Ancho-Reyes, spiced cranberry syrup, lime juice.
SPICY 'N STORMY 12 rum, jalapeno-infused grenadine, ginger liqueur, ginger beer, and lime juice.	AMARETTO COFFEE 12.5 Amaretto, daily brew, demerara, whipped cream, topped with nutmeg.
BOURBON LEMONADE 11.5 bourbon, mint syrup, and lemonade.	WARM VANILLA MARGARITA 14 tequila, Amaretto, house-made vanilla syrup, lime juice.

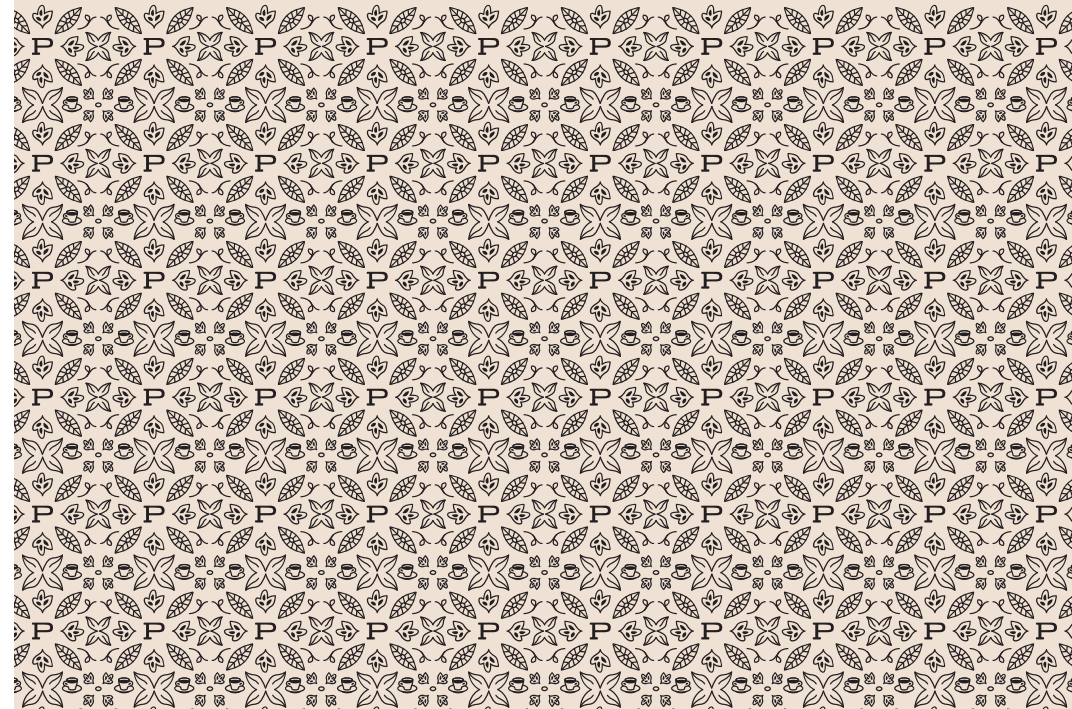
MOCKTAILS

upcharge for liquor 4

SPARKLING CRANBERRY APPLE 8 spiced apple syrup, cranberry juice, rosemary, and club soda	THE BRAMBLE 8 blackberry, honey, mint, topped with club soda
---	---



Beverages



COFFEE & ESPRESSO

DAILY BREW	12oz / 16oz	3.75 / 4.25
POUR OVER	<i>see our current offerings</i> <i>MKT</i>	
ESPRESSO <i>double shot</i>	2oz	3.75
MACCHIATO	3oz	4
CORTADO	4oz	4.25
FLAT WHITE	5oz	4.5
CAPPUCCINO	6oz	4.75

LATTE	12oz	5.25
AMERICANO	8oz	4
AU LAIT	12oz	4.25
NITRO COLD BREW	12oz	6.25
COLD BREW	12oz	5.75

CAN BE SERVED ICED

SEASONAL ALL SYRUPS ARE HOUSE MADE

SALTED PISTACHIO MOCHA	12oz	6.25
espresso, pistachio syrup, mocha syrup, salt, milk of choice.		
CINNAMON PLUM ORANGE TEA LATTE	12oz	6
cinnamon plum tea, orange vanilla syrup, steamed oat milk.		
BANANA BREAD LATTE	12oz	6.25
espresso, banana bread syrup, milk of choice.		

SPICED PEAR CHAI LATTE	12oz	6.5
chai concentrate, spiced pear syrup, milk of choice. <i>add shot of espresso +1.5</i>		
PEAR GINGER SPRITZER	12oz	6
<i>served iced only.</i> espresso, ginger beer, pear syrup, lemon juice. <i>substitute matcha +1</i>		

MORE DRINKS

PURPLE RAIN	12oz	5.75	KOMBUCHA <i>on tap or canned</i>	5
lemonade, butterfly pea flower, honey, mint bitters.				
CHAI LATTE	12oz	6	CHOCOLATE MILK	3.25
MATCHA LATTE	12oz	6	ORANGE JUICE	3.25
AFFOGATO	5.5		APPLE JUICE	3.25
espresso over vanilla ice cream.			SAN PELLEGRINO	.5L 3
HOT CHOCOLATE	12oz	4.25	HOUSE SELTZER	2
CHESS PIE HOT CHOCOLATE	12oz	5		
chocolate, graham cracker syrup, milk of choice.				

Edits

ALTERNATIVE/NON-DAIRY MILKS	1
almond, macadamia, oat	
HOUSE-MADE SYRUPS	1
honey, vanilla, caramel, mocha, or lavender	
ADD AN ESPRESSO SHOT	1.5

**Due to inconsistent supply with NC ABC, some liquors may be substituted for comparable quality and profile in case of outages beyond our control.*

***Consuming raw or undercooked meats, poultry, seafood, shellfish, or eggs may increase your risk of foodborne illness.*

LOOSE LEAF TEA

BLACK

BLACK ICED TEA (SWEET OR UNSWEET)	3.25
ENGLISH BREAKFAST	3.5
brisk, chocolatey.	
EARL GREY	3.5
robust, floral.	

OTHER

JASMINE GREEN	4.25
green tea, floral.	
PEACH BLOSSOM	4.25
white tea, juicy.	

ALL CAN BE SERVED ICED

HERBAL (all caffeine-free)

ICED HIBISCUS BERRY	3.75
fruity, tart.	
CINNAMON PLUM	3.75
juicy, warm.	
TURMERIC GINGER	4
spicy, zesty.	
GINGER LIME ROOIBOS	4
bright, citrusy.	

TEA LATTES	5.25
latte made with your choice of loose leaf tea.	

BEER

BOTTLE/CAN

Featured Brewery

ATOMIC CLOCK | Durham

Ask server about seasonal selections and pricing.

WINE

BOTTLE/GLASS

Please ask us about current selections.



See back for our full cocktail menu.