

BRUNCH CLASSICS

MIMOSAS

MIMOSA GLASS 10 BOTTLE 35
JUICES: orange, peach, pineapple,
cranberry, mango, guava

PIÑA COLADA MIMOSA 12
rum, simple syrup, crème de coconut, pineapple.

BLUE LAVENDER MIMOSA 12
vodka, lavender syrup, blue curacao,
lemon juice.

ORANGE CREAMSICLE MIMOSA 12
vodka, orange juice, heavy cream,
vanilla simple syrup.

BLOODY MARYS

BLOODY MARY 12
vodka.

BLOODY MARIA
Bloody Mary with tequila 12
Bloody Mary with mezcal 14

CLASSIC COCKTAILS

ESPRESSO MARTINI 14
Tito's Vodka, espresso, Tia Maria Coffee Liqueur,
oat milk, demerara syrup.

MARGARITA 14
tequila, lime juice, triple sec, simple syrup,
Tajin rim.

OLD FASHIONED 14
bourbon, bitters, orange bitters, simple syrup,
lemon twist.

SEASONAL COCKTAILS

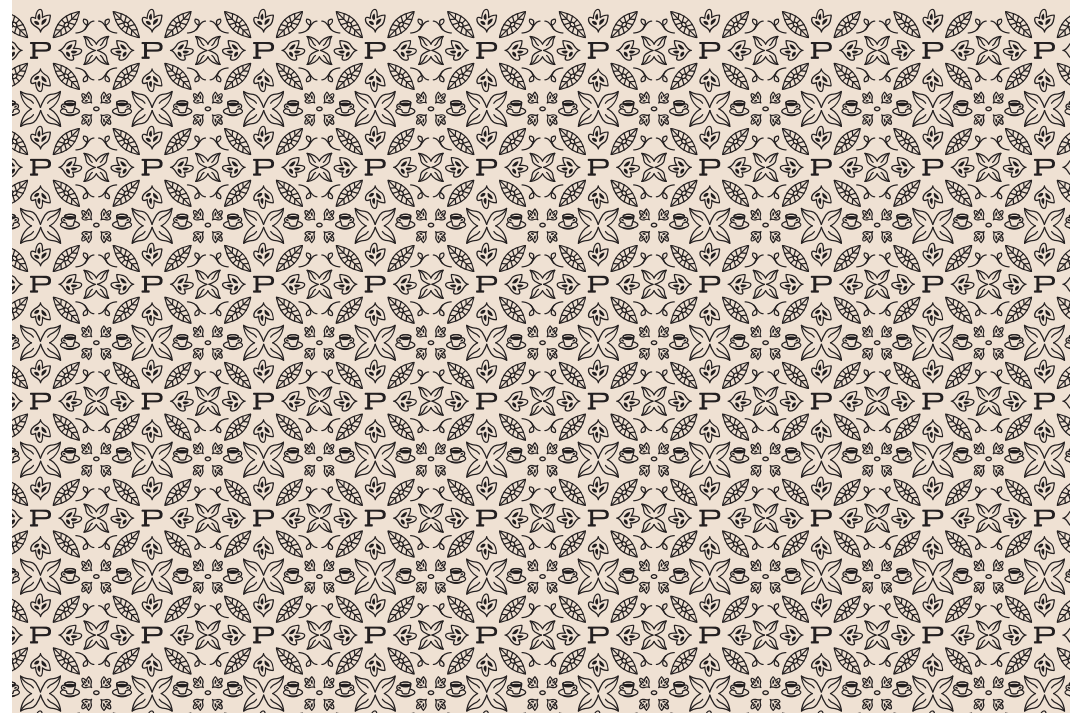
VELVET RYE 16
rye whiskey, Averna Amaro, red wine syrup,
pineapple and lemon juice.

STRAWBERRY GIN SPRITZ 16
Weldon Mills Gin, strawberry syrup,
fresh strawberries, lemon juice, sugar rim.

PAIN KILLER 16
dark rum, pineapple juice, cream of coconut,
orange juice, nutmeg, pineapple wedge.



Beverages



COFFEE & ESPRESSO

DAILY BREW	12oz / 16oz	3.75 / 4.25
POUR OVER	<i>see our current offerings</i> MKT	
ESPRESSO <i>double shot</i>	2oz	3.75
MACCHIATO	3oz	4
CORTADO	4oz	4.25
FLAT WHITE	5oz	4.5
CAPPUCCINO	6oz	4.75




 CAN BE SERVED ICED

LATTE 	12oz	5.25
AMERICANO 	8oz	4
AU LAIT	12oz	4.25
COLD BREW	12oz	5.75



SIGNATURE DRINKS

SALTED PISTACHIO MOCHA 	12oz	6.5	PURPLE RAIN	12oz	5.75
espresso, pistachio syrup, mocha syrup, salt, choice of milk.			lemonade, butterfly pea flower, honey, mint bitters.		

SEASONAL ALL SYRUPS ARE HOUSE MADE

LEMON SHORTBREAD LATTE 	12oz	6.5	STRAWBERRY RHUBARB ESPRESSO TONIC <i>served iced only</i>	12oz	6.5
espresso, lemon syrup, choice of milk.			espresso, tonic water, strawberry syrup, rhubarb bitters, lime juice.		
ALMOND CROISSANT LATTE 	12oz	6.5	STRAWBERRY CITRUS SMASH <i>served iced only</i>	10oz	3.5
espresso, frangipane syrup, choice of milk.			tangerine ginger iced tea, strawberry syrup, lime juice.		
CARDAMOM ORANGE BLOSSOM LATTE 	12oz	6.5			
espresso, orange blossom syrup, cardamom bitters, choice of milk.					

MORE DRINKS

CHAI LATTE 	12oz	6	ORANGE JUICE	3.25
MATCHA LATTE 	12oz	6	APPLE JUICE	3.25
HOT CHOCOLATE	12oz	4.25	LEMONADE	3.25
CHOCOLATE MILK		3.25	SAN PELLEGRINO	.5L 3

Edits

ALTERNATIVE/NON-DAIRY MILKS	1
almond, macadamia, oat	
HOUSE-MADE SYRUPS	1
honey, vanilla, caramel, mocha, or lavender	
ADD AN ESPRESSO SHOT	2.5

LOOSE LEAF TEA

BLACK

BLACK ICED TEA (SWEET OR UNSWEET)	3.25
ENGLISH BREAKFAST brisk, chocolatey.	3.5
EARL GREY robust, floral.	3.5


OTHER

JASMINE green tea, floral.	4.25
RASPBERRY GREEN green tea, fruity.	4.25
PEACH BLOSSOM white tea, juicy.	4.25

ALL CAN BE SERVED ICED

HERBAL (all caffeine-free)

HIBISCUS BERRY	3.75
fruity, tart.	
TURMERIC GINGER	4
spicy, zesty.	
TANGERINE GINGER TEA	4
vibrant, citrusy.	

TEA LATTES 	5.25
latte made with your choice of loose leaf tea.	

BEER

CANS

Please ask us about current selections.

WINE

BOTTLE/GLASS

Please ask us about current selections.



See back for our full cocktail menu.

**Due to inconsistent supply with NC ABC, some liquors may be substituted for comparable quality and profile in case of outages beyond our control.*

***Consuming raw or undercooked meats, poultry, seafood, shellfish, or eggs may increase your risk of foodborne illness.*